



## Parental Controls information

### Type of guide

Smartphone and other devices

---

### Features and Benefits

Creating restricted profiles limits the access your children have and content on your Android Tablet and restrict in-app purchasing.

---

### What specific content can I restrict?



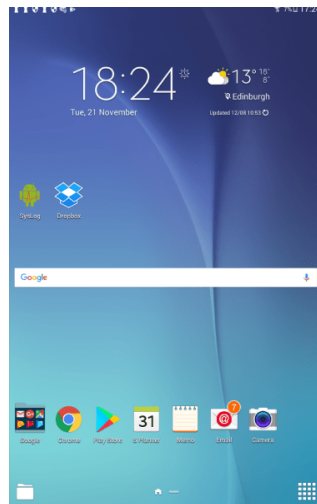
### What do I need?

You will need your Google account email and password for the device

## Step by step guide

1

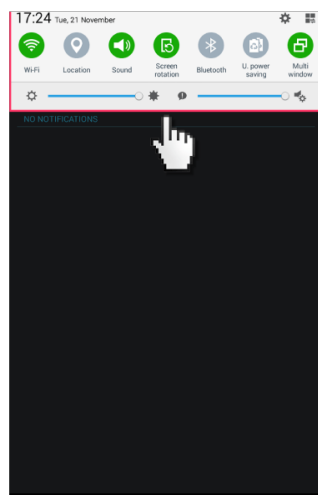
Go to the tablet home screen



## Step by step guide

2

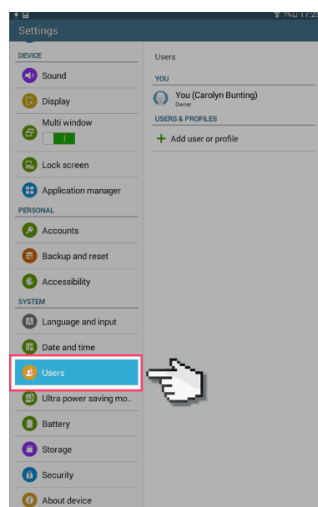
Swipe down from the top of the screen to see the settings panel. Select the cog icon in the top right corner to open the settings menu.



## Step by step guide

3

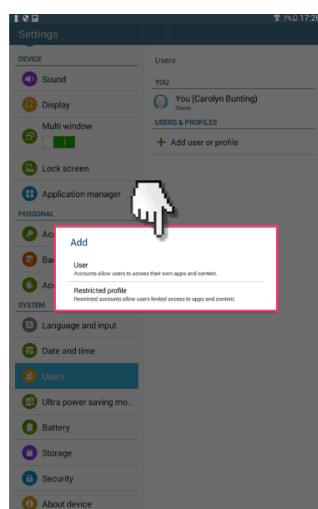
scroll down and select 'Users'.



## Step by step guide

4

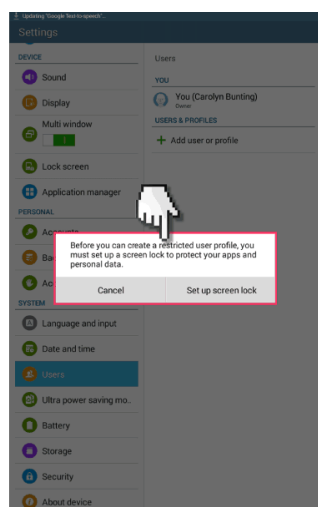
Add new 'Restricted User'



## Step by step guide

5

Next create a screen lock and password.



## Step by step guide

6

Select the password style.

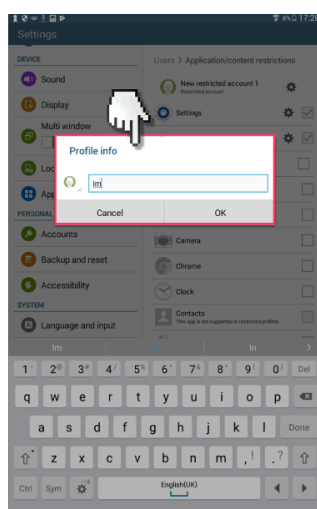




## Step by step guide

7

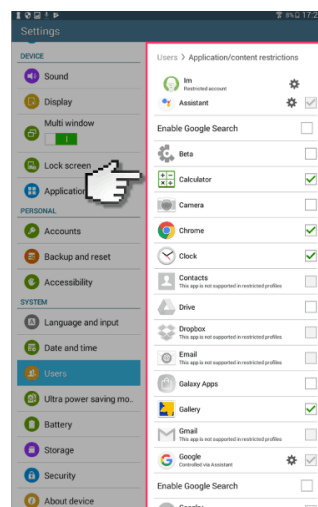
Next, choose the profile name.



## Step by step guide

8

Then once back in the users menu panel, select the new restricted user and select all the apps you want restricted access too.



## Step by step guide

9

You'll now need a password every time you want to log into the unrestricted user so the child can't access restricted content.

